

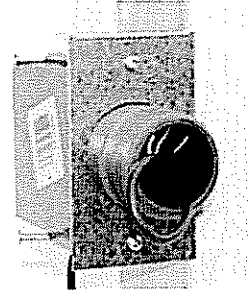
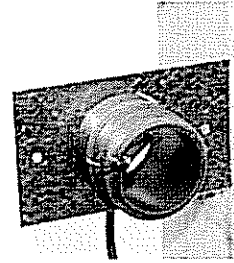
## CONTROL ROUGH-IN INSTRUCTIONS

Mount the rough-in plate flush to the stud's surface,

either directly to a stud

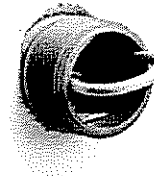
or

to a single-switch box

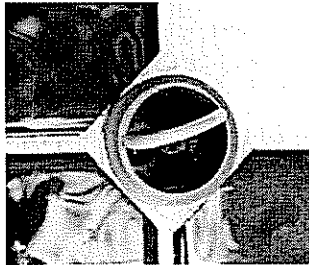


*Throughout the following steps, make sure the control cable is kept accessible and protected from damage. It will be needed later to connect the control.*

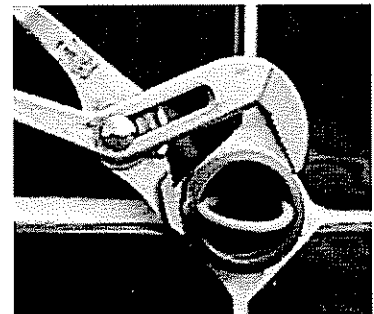
Cut a 1-7/8" diameter hole to match the rough-in plate and rough-in fitting



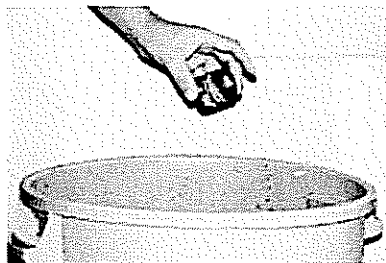
Tile or finish the wall surface up to the rough-in fitting



then remove the rough-in fitting

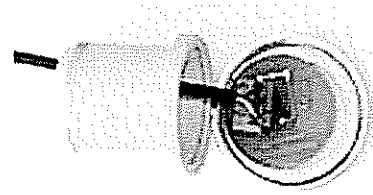


and throw it away.

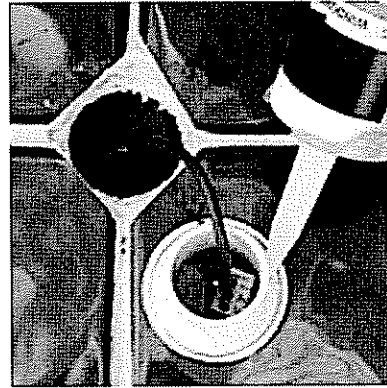


## CONTROL ROUGH-IN INSTRUCTIONS

Connect the control cable provided to the switch. Your control may use a phone jack type cable or a 3 wire cable. Use the cable's wire colors to match wire connections to the steam generator circuit board's terminal block. We recommend connecting the white wire to position 1 at each end, red to positions 2 and black to positions 3 if your control uses a 3 wire cable.



Run a bead of silicone around the back of the control



Clean the wall surface to ensure the silicone will adhere then place the control into the hole and tape in place until the silicone cures.

